

# DUNLOP PAWA 110kVA

50Hz 1500RPM 88kW/110kVA

## General Features

- Low noise/super silent canopy design
- Forklift pockets available
- Residential silencer with flexible exhaust pipe
- MCCB & maintenance-free starting battery
- External fuel inlet, coolant drain, oil drain
- External power outlet distribution available
- Bunded base with 24-hour base fuel tank @75% load
- 50°C Radiator as standard spec;
- Radiator fan is driven by belt with safety guard
- Vibration isolators between engine/alternator and base frame
- All-round protection functions and safety labels
- User manual of engine, alternator, controller



## Generator Ratings

| Voltage | HZ | Phase | P.F (COS $\phi$ ) | Prime Amps | Prime Ratings(kW/kVA) | Standby Ratings(kW/kVA) |
|---------|----|-------|-------------------|------------|-----------------------|-------------------------|
| 380/220 | 50 | 3     | 0.8               | 152        | 80/100                | 88/110                  |
| 400/230 | 50 | 3     | 0.8               | 144        | 80/100                | 88/110                  |
| 415/240 | 50 | 3     | 0.8               | 139        | 80/100                | 88/110                  |

- Prime Power: Continuous running at variable load for unlimited periods; 10% overload available for 1 hour in every 12 hours.
- Standby power: Continuous running at variable load in the event of a utility power failure; No overload is permitted on these ratings.

## Sales Promise

**DUNLOP** provides a full line of brand new and high quality products.

Each unit is strictly factory tested before delivery.

Warranty is according to below standard conditions, subject to the earlier one:

- 12 months after shipment
- 1000 accumulated running hours

Service and parts are available for the generator life time from **DUNLOP**.

**Engine**

|   |                       |
|---|-----------------------|
| <b>Manufacturer / Model</b>                       | DCEC/6BT5.9-G2        |
| <b>Air Intake System</b>                          | 4 Cycle, Turbocharged |
| <b>Fuel System</b>                                | Direct Injection      |
| <b>Number of Cylinders / Cylinder Arrangement</b> | 6 in Line             |
| <b>Displacement (L)</b>                           | 5.9                   |
| <b>Bore × Stroke (mm × mm)</b>                    | 102 z 120             |
| <b>Compression Ratio</b>                          | 17.3:1                |
| <b>Rated Speed (RPM)</b>                          | 1500                  |
| <b>Standby Power @ Rated Speed (kW)</b>           | 106                   |
| <b>Speed Governor</b>                             | Mechanical/Electrical |
| <b>Fuel Consumption @ 100% Load (L/h)</b>         | 24.2                  |
| <b>Fuel Consumption @ 75% Load (L/h)</b>          | 18.2                  |
| <b>Fuel Consumption @ 50% Load (L/h)</b>          | 12.5                  |
| <b>Fuel Consumption @ 25% Load (L/h)</b>          | 7.3                   |
| <b>Total Oil Capacity (L)</b>                     | 16.4                  |
| <b>System Voltage (V)</b>                         | DC 24                 |

## Alternator

Compliance with GB755, BS5000, VDE0530, NEMAMG1-22, IED34-1, CSA22.2 and AS1359

|  |   |
|--|---|
| <b>Exciter Type</b>                        | Single bearing, Brushless, Self-excited |
| <b>Rated Output Prime Power (kVA)</b>      | 100                                     |
| <b>Rated Speed (RPM)</b>                   | 1500                                    |
| <b>Rated Frequency (Hz)</b>                | 50                                      |
| <b>Phase</b>                               | 3                                       |
| <b>Power Factor</b>                        | 0.8                                     |
| <b>Voltage Adjust Range</b>                | ≥5%                                     |
| <b>Voltage Regulation NL-FL</b>            | ≤±1%                                    |
| <b>Insulation Class / Temperature Rise</b> | H / H                                   |
| <b>Protection Grade</b>                    | IP23                                    |

## Main Electrical Performance

| Voltage                |             |              |                               | Frequency              |                               |              |             |
|------------------------|-------------|--------------|-------------------------------|------------------------|-------------------------------|--------------|-------------|
| Stable Regulation Rate | Fluctuation | Recover Time | Instantaneous Regulating Rate | Stable Regulation Rate | Instantaneous Regulating Rate | Recover Time | Fluctuation |
| +/-2.5%                | 0.5%        | 1.5s         | +20%/-15%                     | +5%                    | +/-10%                        | 5S           | 0.5%        |

## Control System

We use famous and reliable controller brands such as DEEPSEA, COMAP & SMARTGEN.

| Protection               |                   | Parameter   |                   |
|--------------------------|-------------------|-------------|-------------------|
| • Low Oil Pressure       | • Over Crank      | • Volt      | • Oil Pressure    |
| • Over Speed             | • Over / Low Volt | • Current   | • Oil Temp.       |
| • Over Load              |                   | • Power     | • Power Factor    |
| • Over / Low Frequency   |                   | • Speed     | • Running Time    |
| • Battery Charge Failure |                   | • Frequency | • Water Temp.     |
| • High Water Temp.       |                   |             | • Battery Voltage |

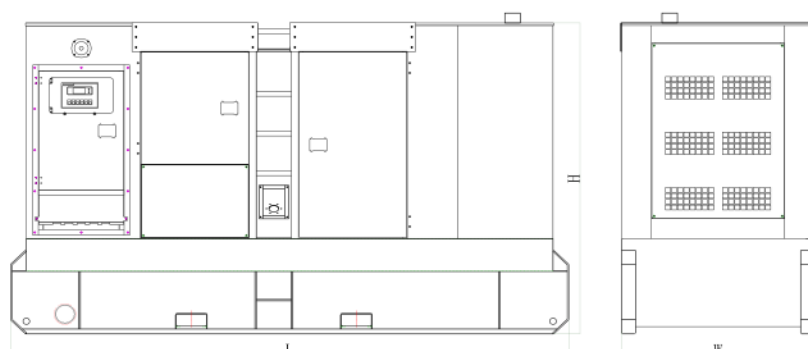


**DSE7320**

## Dimension & Weight

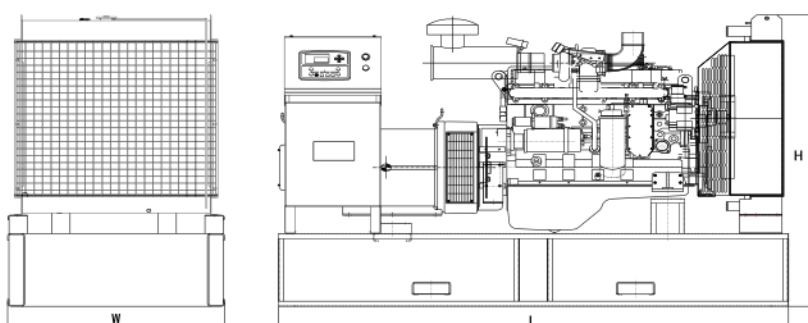
### Canopy Type (DP 110kVA)

|        |        |
|--------|--------|
| Length | 3040mm |
| Width  | 1100mm |
| Height | 1879mm |
| Weight | 2175KG |



### Open Type (DP 110kVA)

|        |     |
|--------|-----|
| Length | N/A |
| Width  | N/A |
| Height | N/A |
| Weight | N/A |



## Generator Spare Parts Options

### Generator Set

- ☐ Trailer generator set
- ☐ ABB MCCB circuit breaker
- ☐ Rental Type heavy-duty canopy
- ☐ Hot-dip galvanized skid base

### Alternator

- ☐ PMG excitation
- ☐ Anti Condensation Heater
- ☐ RTD for alternator AC windings

### For Cold Area

- ☐ Water heater
- ☐ Oil heater
- ☐ Fuel heater
- ☐ Electronic space heater

### Exhaust System

- ☐ Residential exhaust silencer
- ☐ Stainless steel exhaust pipe
- ☐ Emission after-treatment system

### Fuel System

- ☐ 12 hours base fuel tank
- ☐ 24 hours base fuel tank
- ☐ Double bunded base fuel tank
- ☐ Outside fuel tank

### Auto System

- ☐ Remote Control panel
- ☐ ATS control cabinet
- ☐ Paralleling System

**DUNLOP** reserves the right to change specification without prior notice in line with our continuous product development. For more information, please contact your local Sales or email us [ian\\_hodge@dunlop-png.com.pg](mailto:ian_hodge@dunlop-png.com.pg)